

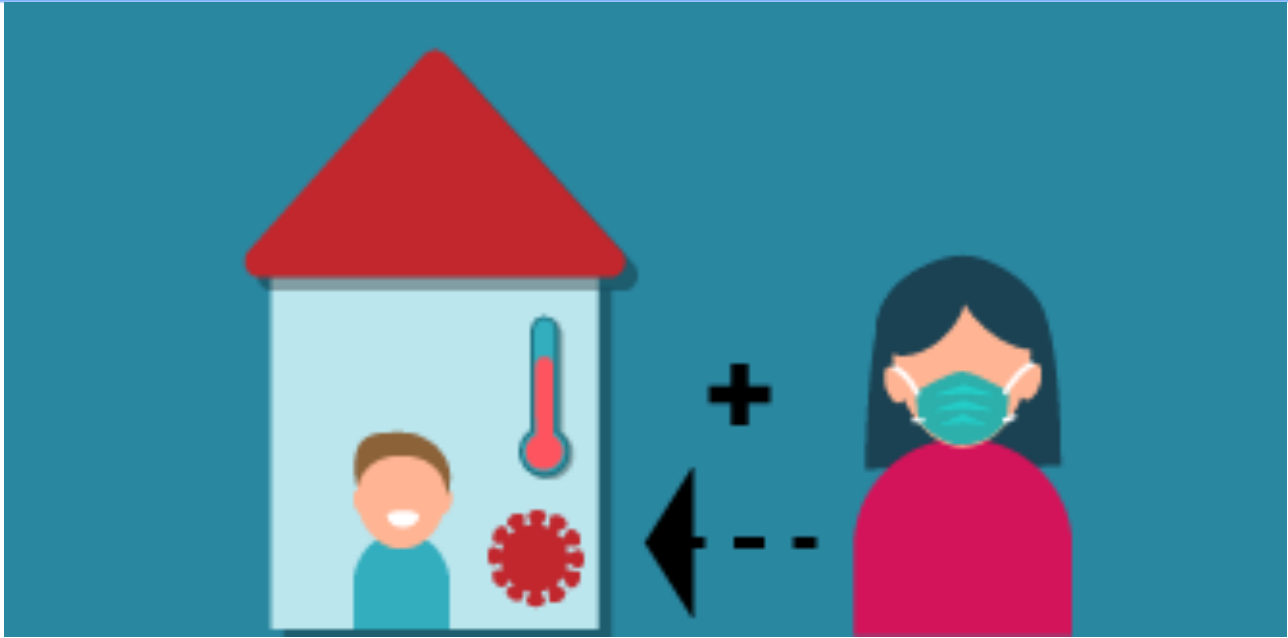
Who is required to go into isolation?

The goal of isolation is to reduce infection and contain the spread of COVID-19 in Israel. Isolation means avoiding contact with other people, including household members for the period specified in the Ministry of Health Director General Order.

Share:

Isolation of confirmed COVID-19 patients
Symptomatic cases with a suspicion of a COVID-19 infection
Isolation for asymptomatic contacts with a confirmed COVID-19 case
Isolation for international passengers arriving in Israel
Isolation of a caregiver of a dependent
Isolation for people who tested "borderline positive"
People exempt from isolation
Home isolation guidance
Isolation duration and an option to shorten isolation
Employee isolation benefits
Open a dispute over an isolation order
Updating isolation information
A Permit to Exit and Return to Isolation
Permission for Confirmed Cases and People in Isolation to Go Outdoors to Cast their Votes in the Primary Elections (Primaries)

Isolation of a caregiver of a dependent



In a case where the isolated person is dependant on others (for example a baby or a person with a mental disability), it is recommended an adult (preferably one adult only) assist that person.

Assigning a caregiver

The caregiver will stay with the self-isolating person and remain in isolation for the entire duration. It is preferable that there be only one caregiver, but if more are necessary, **all caregivers will be required to complete isolation in full with the isolated person.**

Duration of isolation

In case an individual in isolation is dependent on another and is not a confirmed case during isolation, the caregiver may complete the isolation together with the dependent who is in isolation.
Note that if the individual in isolation is a confirmed coronavirus case, **the caregiver is required to remain in isolation for 13 full days + the hours remaining until 24:00 on the 14th days after the time of the last contact with the confirmed pendant, and if the caregiver stays with the dependent until full recovery – until full recovery of the dependent.**
A caregiver of more than one individual in isolation (for example, a parent taking care of several children) will calculate the duration of the required isolation from the last day of isolation of the last individual that completes isolation.

[Information about the option to shorten the duration of isolation](#)

Onset of symptoms

If you have symptoms related to COVID-19 within 14 days following contact with a confirmed COVID-19 case, even if both of you had protection, and even if both of you were not required to isolate or you have already completed a shorter isolation duration or for any other reason, you must go into isolation and get tested for COVID-19.
There is no need to go to the HMO clinic or the emergency room at the hospital, unless it is a medical emergency. In case of an emergency, call your HMO clinic or the hospital ahead and mention that a potential COVID-19 case is about to arrive.

[More info](#)

Reporting

Caregivers of people that are required to go into isolation must report their isolation address to the Ministry of Health. The caregiver who is required to go into isolation too must fill out a form, and check "caregiver".
[Isolation address report form for people who have had contact with a confirmed COVID-19 case](#)

Previous page: Next page:

Isolation for international passengers arriving in Israel

Isolation for people who tested "borderline positive"

More on the subject

[Report isolation after contact with a confirmed COVID-19 case](#)

[Isolation report for international inbound passengers](#)

- Useful Links
- COVID-19 frequently asked questions
- Coping and a healthy routine
- COVID-19 guidance
- COVID-19 communication resources
- Testing for COVID-19
- Vaccination Certificate

This page was last updated on 09.02.2021

Services

Aliyah and integration	Citizenship, documents and passports	Construction and housing
Culture, sports and tourism	Education and learning	Energy, environment and agriculture
Enforcement, law and government	Family and personal status	Health and welfare
Industry, commerce and communications	Labor and employment	People with disabilities
Security and emergency	Taxes and Payments	Transport

Useful information

Government databases	Egov for children
Tenders	Smart cards
Copy of payment confirmations	RSS

Support

- Central Government Call Center
- Call Us 1299
- Technical support for online services
- Contact information security