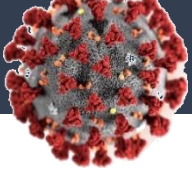


# Lesotho National COVID-19 situation and Mitigation Measures

The Right Honourable the Prime Minister, Dr Moeketsi  
Majoro's National Address

1<sup>st</sup> January 2021

# Movements in COVID-19 outbreak in the population



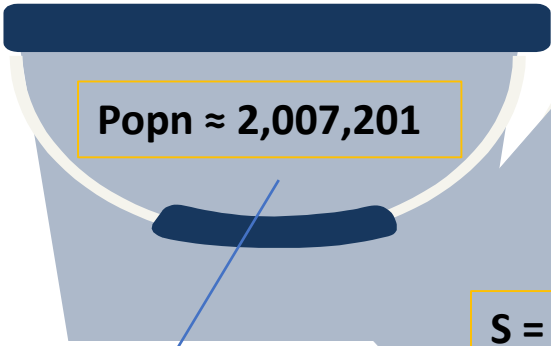
New Tests: 01 January 2021



236

Cumulative Cases: 01 January 2021

Tests	+ cases	Recoveries	Deaths
33,345	3,206	1,496	65
	Cumulative positive rate (9.6%)	Recovery rate (46.7%)	CFR (2.03%)



Lesotho Population

S = 2,003,995

Susceptible population after 3,206 infections and 1,496 recoveries

Cumulative Infections

I = 3,206

Cumulative Recoveries

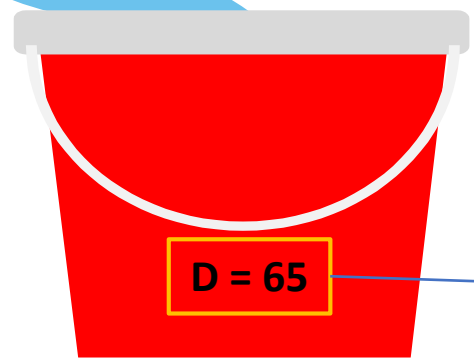
New Infections (47.5%)

112

New Recoveries (0.5%)

16

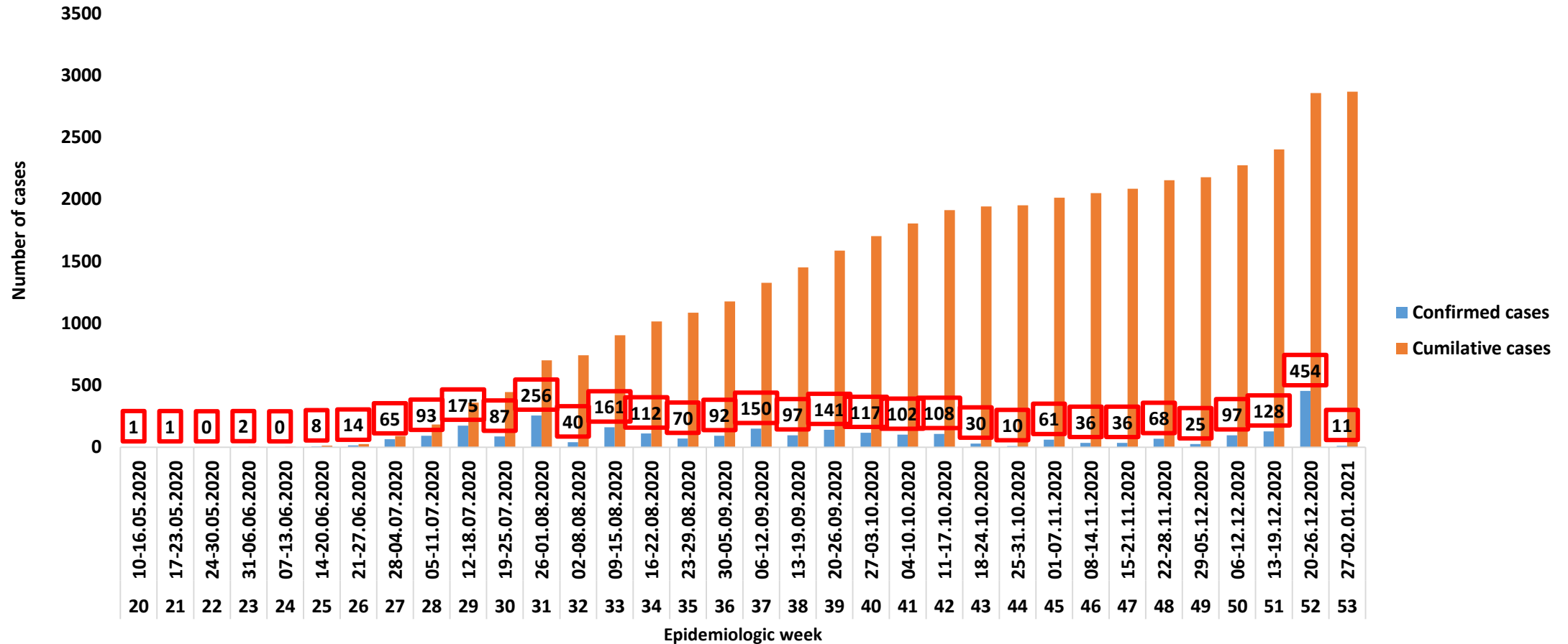
New Deaths (14)



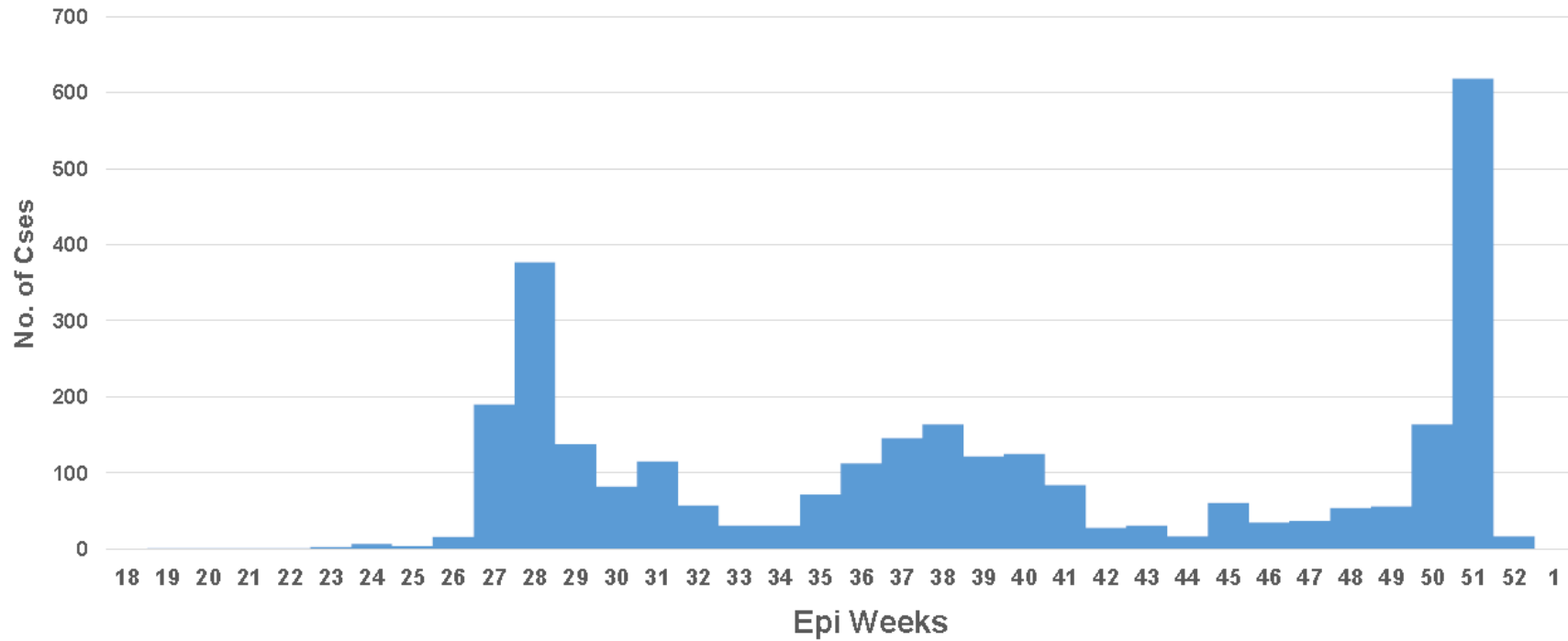
Cumulative Deaths

# Weekly new cases (N=2869 confirmed cases)

## Based on the available data

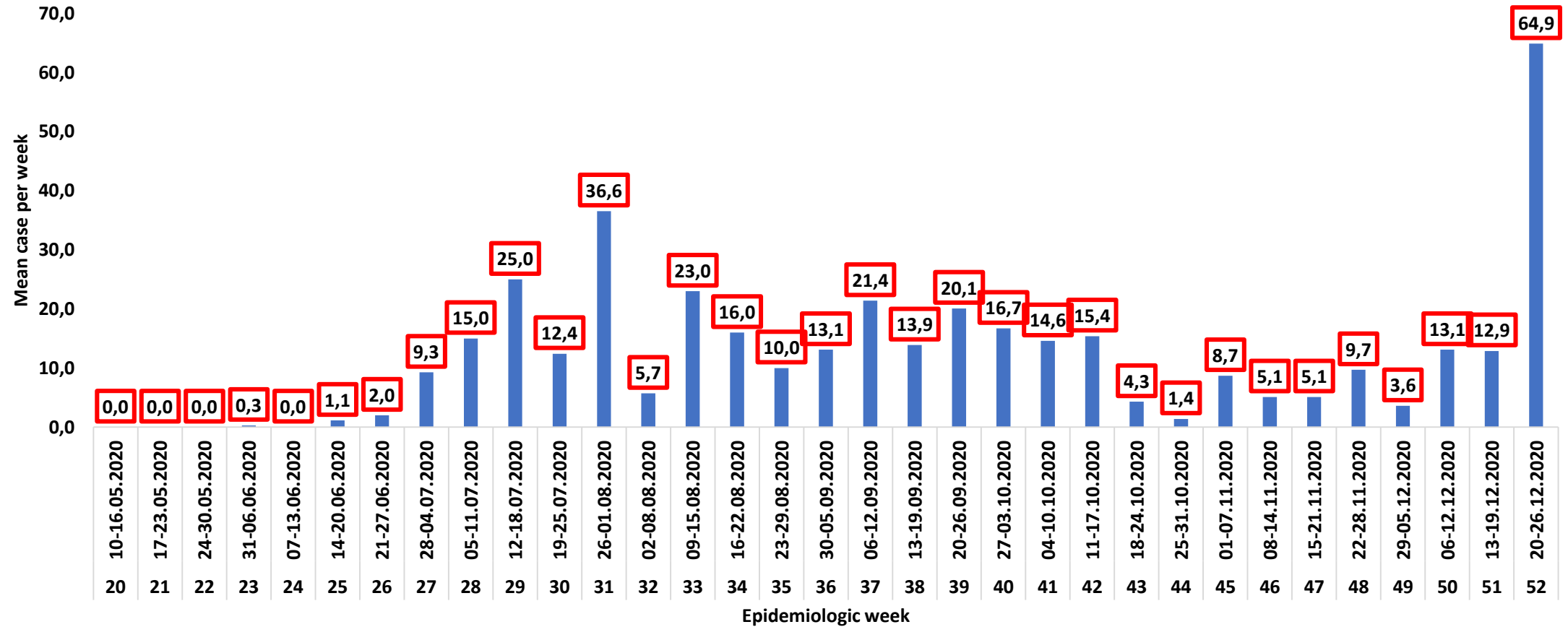


# Epidemic curve of confirmed COVID-19 cases by date of specimen collection in Lesotho, 01 May-26 Dec 2020 (n=2999)

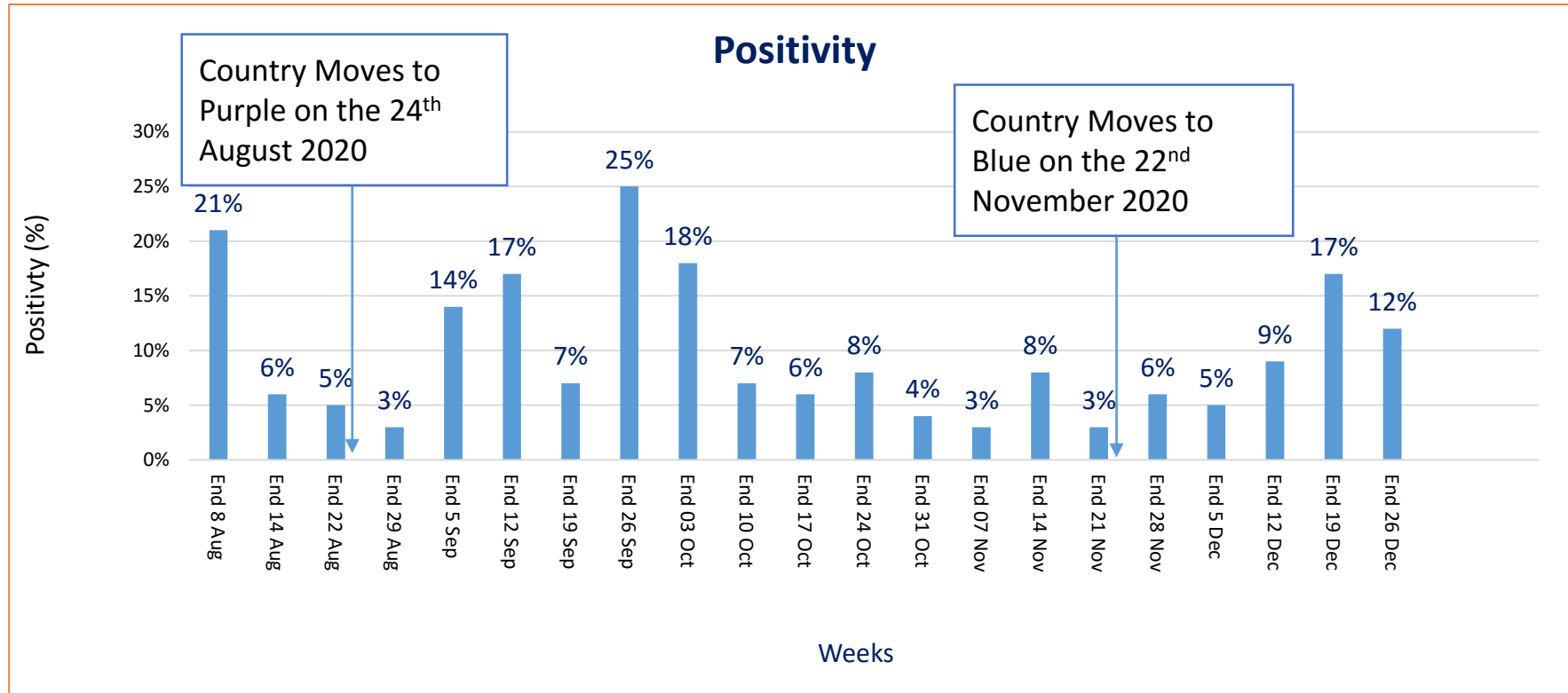


# Weekly mean cases (N=2858 confirmed cases)

## Based on the available data

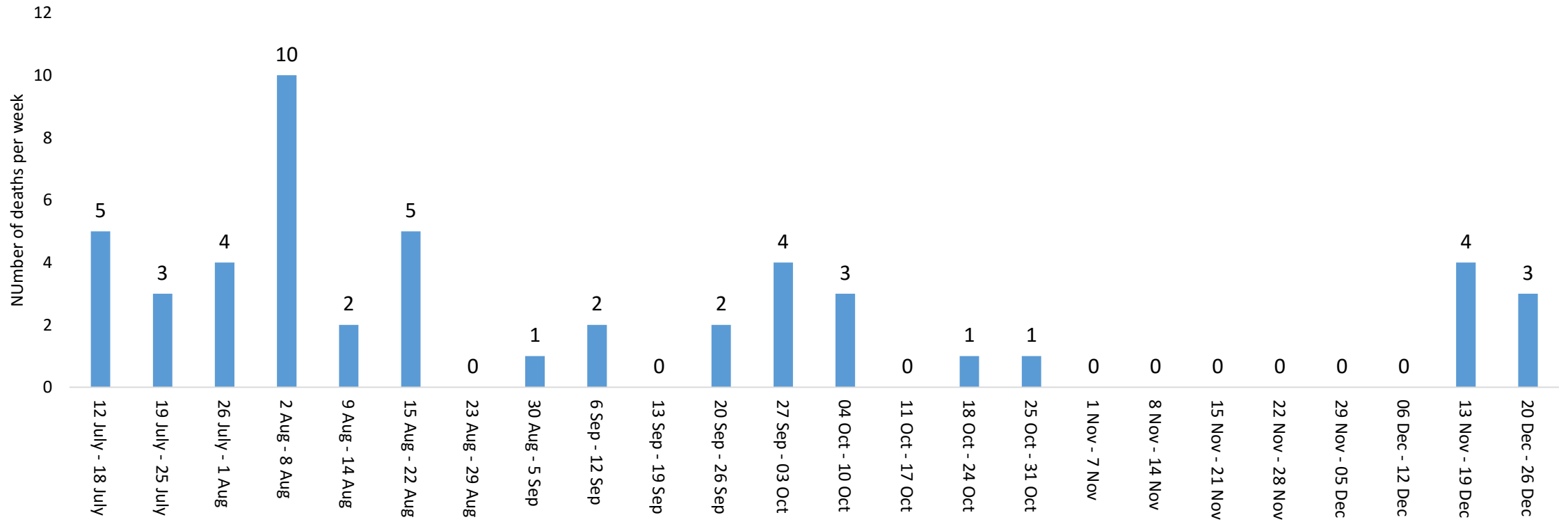


# Lesotho Epidemiological Update | Weekly Positivity



# Lesotho Epidemiological Update | Deaths per week

Total Number of Deaths Per Week



Epidemiological Week (Sunday - Saturday)

# New data on deaths

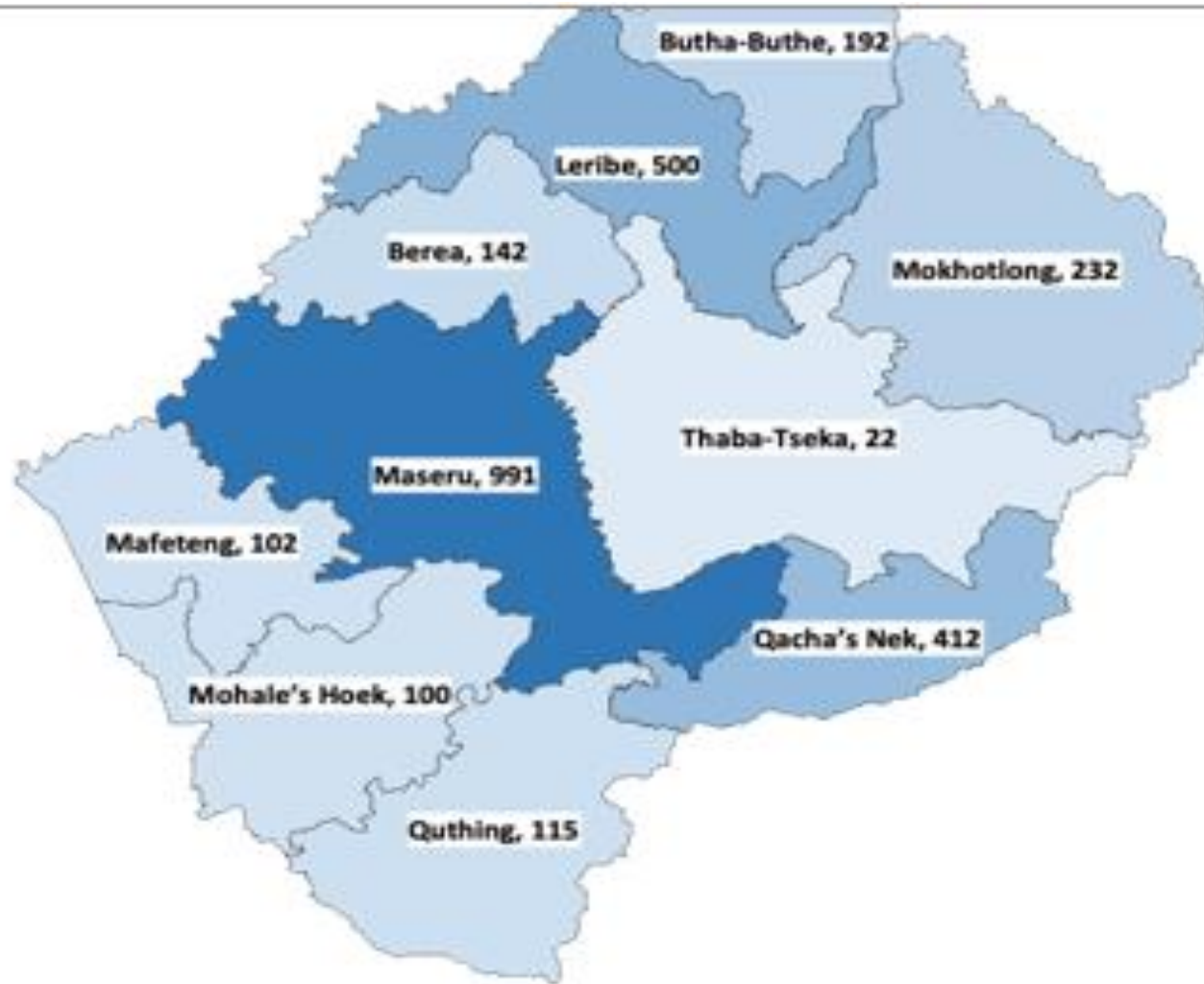
District	Confirmed
Maseru	4
Mafeteng	3
Mokhotlong	4 (probable)
Berea	3
TOTAL	14



# Distribution of cases per districts (N=2895 confirmed cases)

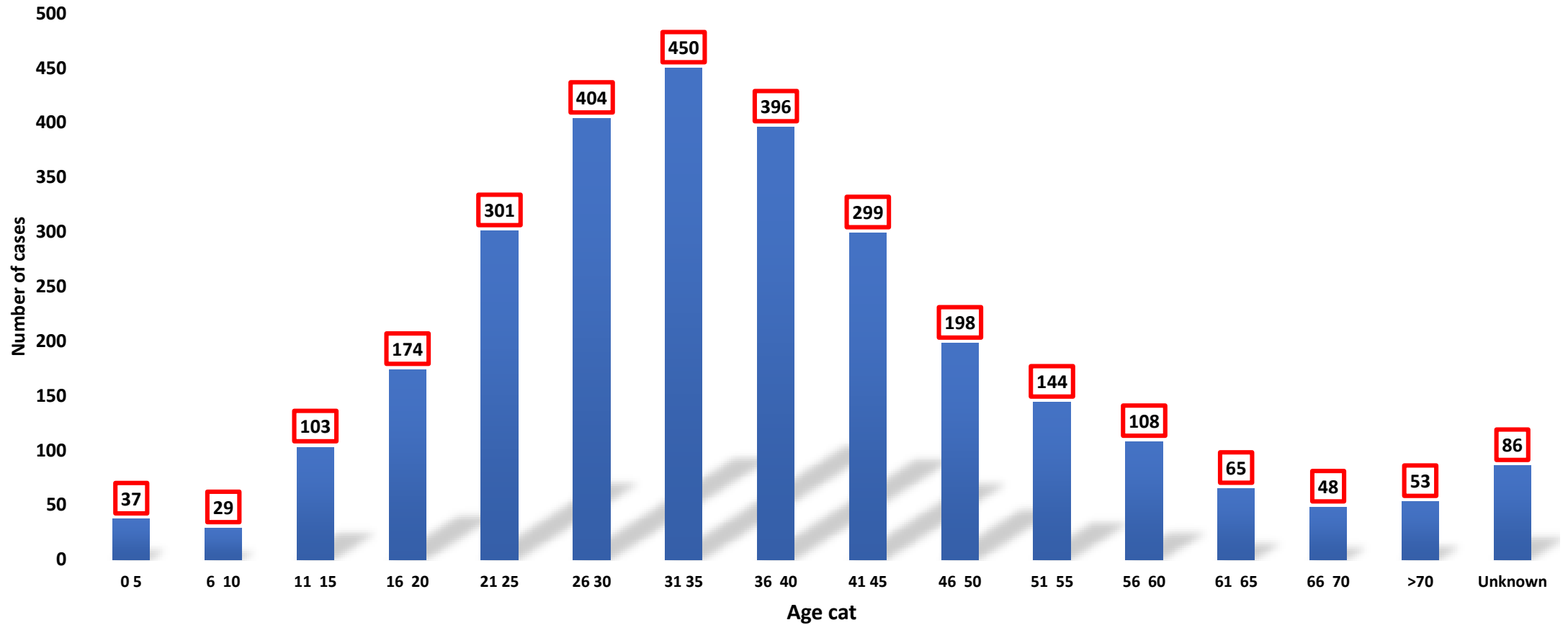
**Based on the available data**

---

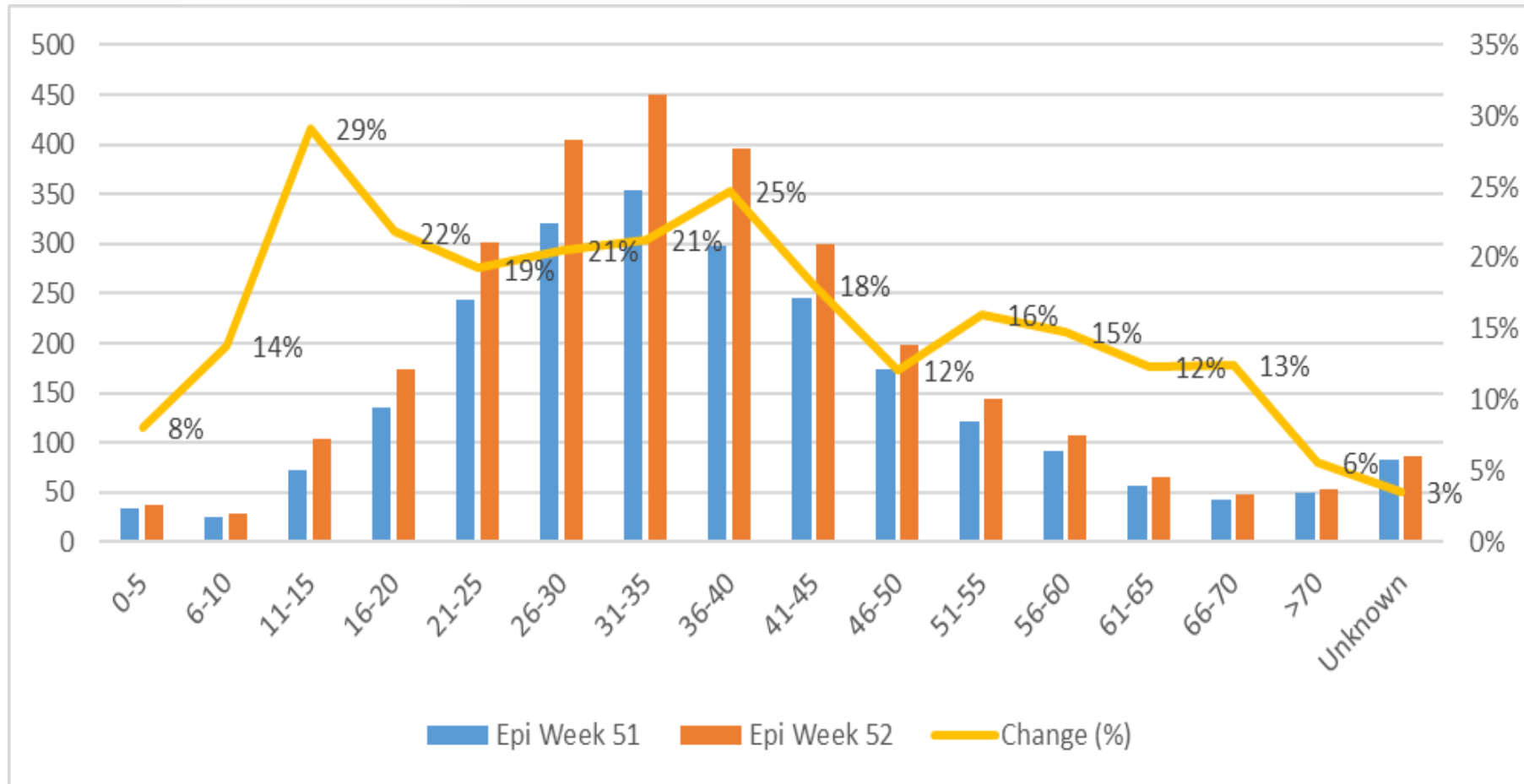


# Distribution of cases per Age group (N=2895 confirmed cases)

## Based on the available data

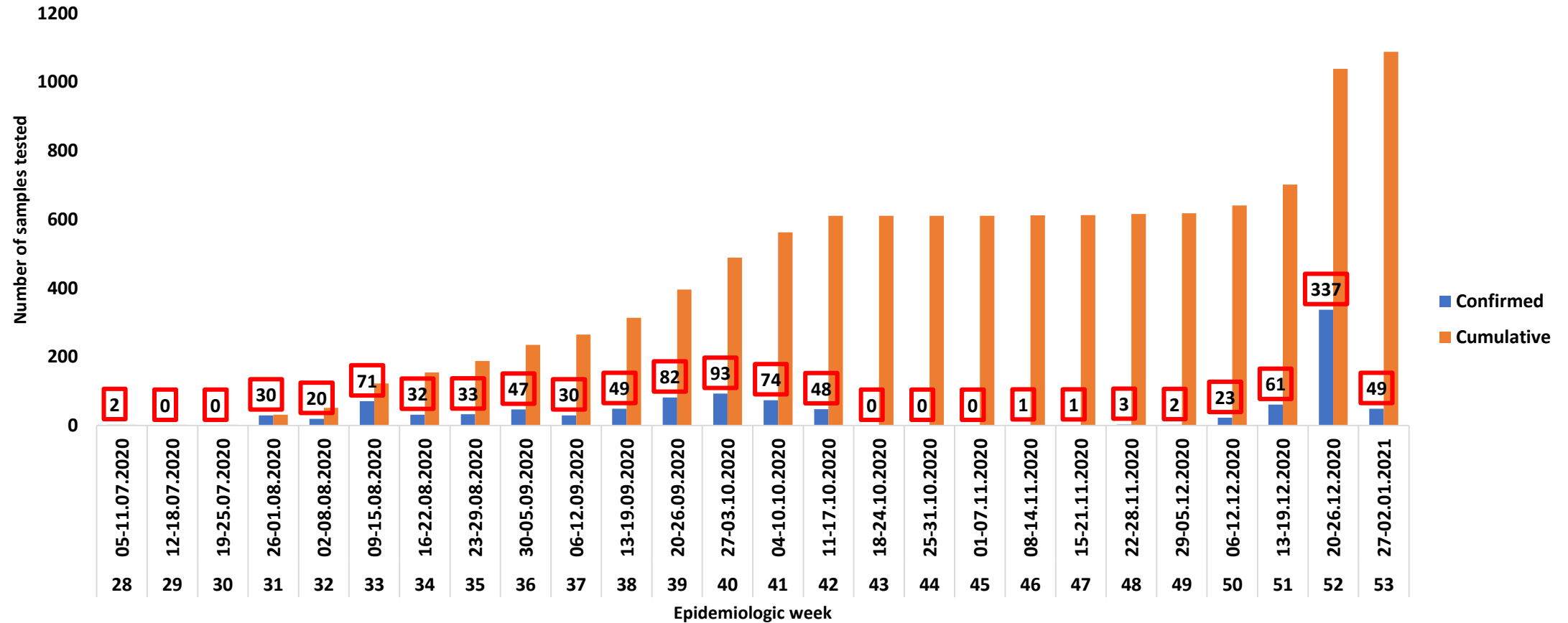


# Weekly Change: Cases by Age group

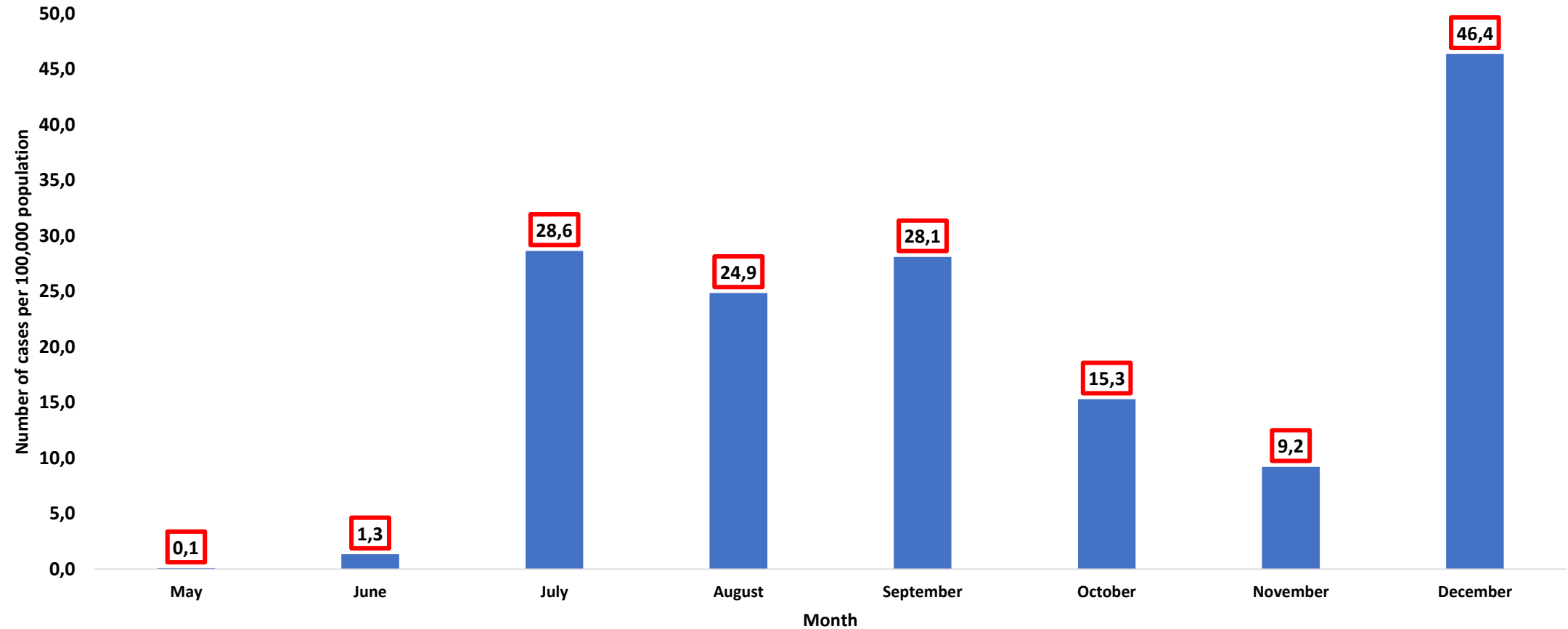


# Weekly new cases among travellers (N=1088 confirmed cases)

## Based on the available data



# Monthly Attack rates (based on the notifications)



## Key findings \*

- The positivity rate of samples has been increasing and remained higher than 5% in the last three weeks (from 9% on the week ending 12 Dec to 17% on the week ending 19 Dec to 12% on the week ending 26 Dec)
- The number of cases/100,000 population in December monthly attack rate show that the risk of getting COVID-19 has increased to 46.4% compared to November and October with 9.2% and 15.3%, respectively
- Experiencing more than 2 confirmed deaths weekly for the last two weeks after consecutive seven weeks of 0 deaths

\* Based on the WHO public health criteria to adjust public health and social measures in the context of COVID 19: Annex to Considerations in adjusting public health and social measures in the context of COVID-19, 12 May 2020

## Key findings \*

- Number of infections among the young people has rapidly increased ranging from 12% for age group 21-25 to 14% on age group 16-20, and 33% on age group 11-15.
- Number of positive cases from the in-bound travelers increased drastically in the past four weeks (from 2 to 337)
- $R_0$  is not being calculated as epidemiologically is no longer suitable to inform the trend of the pandemic, rather the positivity rate is the key determinant of the trend and level of risk and threat of the pandemic

\* Based on the WHO public health criteria to adjust public health and social measures in the context of COVID 19: Annex to Considerations in adjusting public health and social measures in the context of COVID-19, 12 May 2020

## Key findings \*

- The rapid increasing transmission of the virus and positivity in the country is attributed to:
  - Declined compliance to Covid-19 health prevention protocols especially adherence to wearing of masks and physical distancing at social and economic activities and gatherings in particular entertainment events, bars, schools, work-place and public transport
  - Clusters of infections at schools, among the inbound travelers and at work place posing risk of increasing transmission of infections in the communities during festive season
  - Weak enforcement of compliance to prevention protocols in all sectors of society



# Recommendations

- According to the epidemiological analysis, reinforcing the public health is recommended to break the transmission cycle and contain the cluster of cases to limit wide spread transmission
- Security Cluster and Community Leaders must enforce compliance to Covid-19 health prevention protocols
- To implement stricter restrictions on the super-spreader movements and economic and social activities by moving the country from the current **Blue** to **Purple** colour coding stage of the Risk Determination Framework Mitigation measures in order to reduce the virus infection spread
- The restrictions in the **Purple** to be implemented for the 14 days starting from midnight of Sunday 03 January 2021
- ***Below are the Purple colour coding stage mitigation measures to implement and adhere to***



UN Geneva ✓

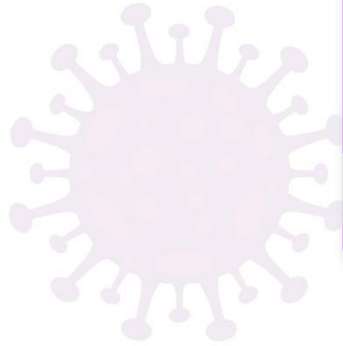
@UNGeneva



*"We're asking everyone to treat the decisions about where they go, what they do, who they meet, as life-and-death decisions – because they are." @DrTedros #COVID19*



# LIQUOR STORES



- **Open Monday to Friday**
- **Time: 9am - 5pm**
- **Take-aways only of:**

**1 - 10% Alc=1.5 Cases pp**

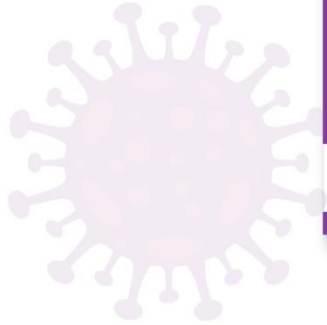
**11 - 20% Alc=6 Litre pp**

**+21% Alc=1 Litre pp**



**NACOSEC**  
NATIONAL COVID-19 SECRETARIAT

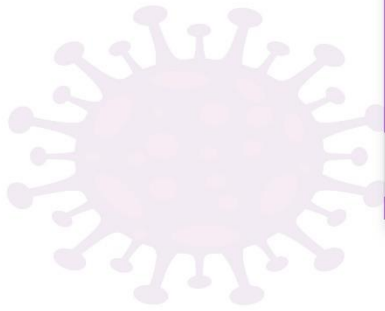
# RESTAURANTS



- **Observe COVID-19 protocols.**
- **No alcohol allowed for sit in**
- **Open from 8am -9pm**
- **Sit in allowed**



# ENTERTAINMENT INDUSTRY



**Events start from 10am  
to 5pm**

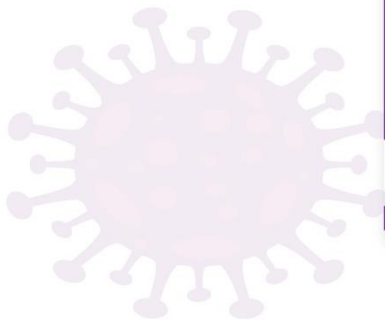
## OUTDOOR ENTERTAINMENT

- Permitted in only privately owned property with a maximum of 120 people per 300 Square meters.
- In large open areas only maximum of 500 people allowed.
- Provide not less than five security guards/bouncers.
- Alcohol not allowed



**NACOSEC**  
NATIONAL COVID-19 SECRETARIAT

# ENTERTAINMENT INDUSTRY



Events start from 10am  
to 5pm

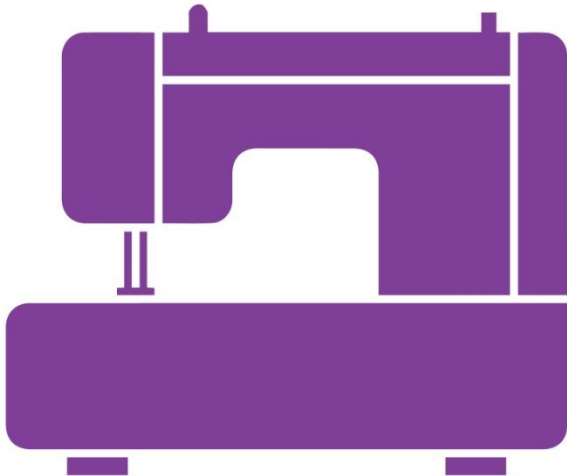
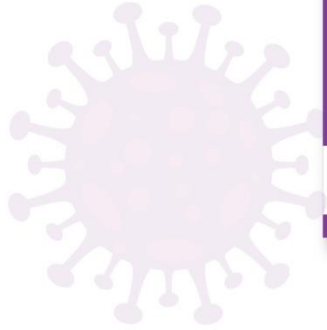
## INDOOR ENTERTAINMENT

- Permitted subject to issuance of approved permit by Ministry of Tourism and NACOSEC
- Permitted for a maximum of 120 people per 300 Square meters.
- Where the area is less than 300 square meters allow only 50% capacity.
- Provide two security guards/bouncers.
- Alcohol not allowed



**NACOSEC**  
NATIONAL COVID-19 SECRETARIAT

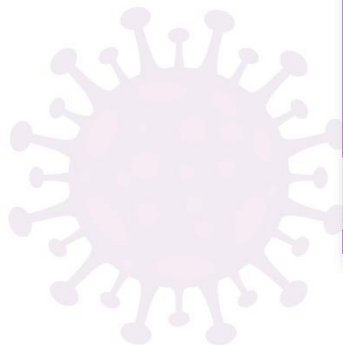
# TEXTILE/MANUFACTURING INDUSTRIES



- Normal working hours with 50% maximum staff capacity
- Introduce 7:00 pm to 5.00am night shifts for all sectors with 2hr break



# RETAIL SUPERMARKETS & GROCERY STORES



- **Restrict number of people per store  
1 person per every square meter  
unoccupied**
- **Opening from 07:00a.m  
and close at 07:00 p.m**







# BUSINESS NETWORKING & CONFERENCES



- **Permitted observing limited 30 people  
not more than 2 hours**



# PUBLIC TRANSPORT



- **4+1: Full capacity**
- **15 Seater: Full seated capacity, no standing**
- **22 seater: Full seated capacity, no standing**
- **Bus: Full seated capacity, no standing**
- **Adhere to all COVID-19 safety protocols**

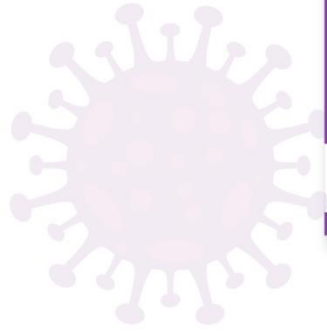


# CHURCHES

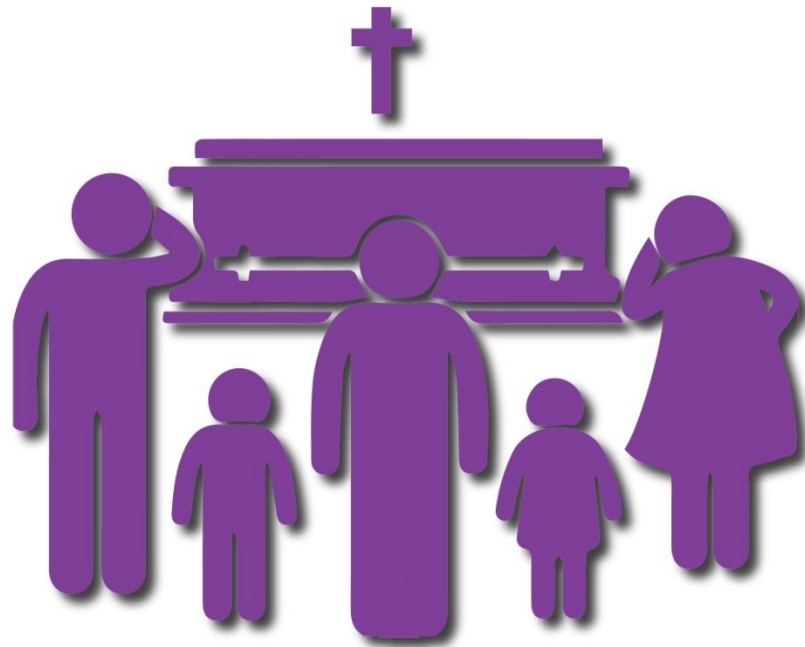


- **Maximum of 50 people if inside.**
- **Maximum of 100 people if outside and the service should last for two hours.**
- **Masks must be worn all the time including when singing.**





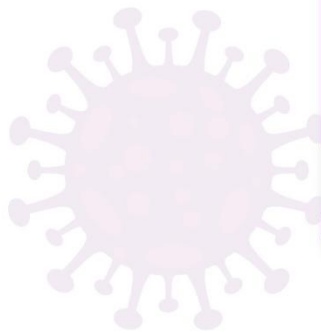
# FUNERALS



- The burial service be outdoors with no more than 100 people, not take more than 2 hours and to be completed not later than 10 am.
- No buffet service, only pre-packed meals.

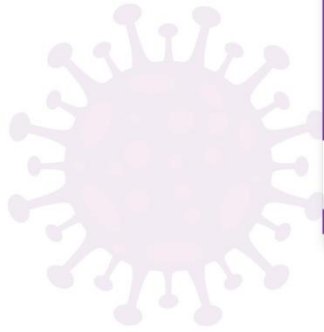


# WEDDINGS



- **Allow only 50 people if inside and 100 people if in an open outdoor setting. Alcohol not allowed.**
- **Wedding to last for two hours only.**
- **No buffet service, only pre-packed meals.**





# SOCIAL/FAMILY GATHERINGS

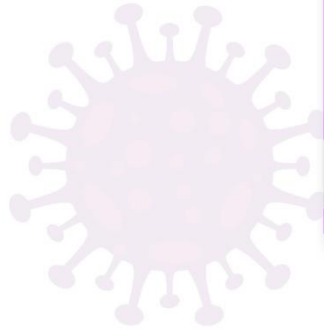


- **Open for 100 people outside only.**
- **COVID-19 Protocols observed. Alcohol not allowed**



**NACOSEC**  
NATIONAL COVID-19 SECRETARIAT

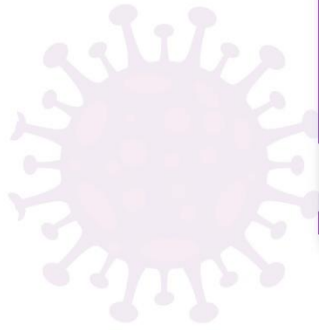
# SPORTING EVENTS



- **Outdoor sports permitted with no spectators while observing COVID-19 protocols.**
- **No alcohol allowed.**
- **The maximum number of persons permitted at any sporting event shall not exceed 100 and shall include all players, officials and administrative staff.**



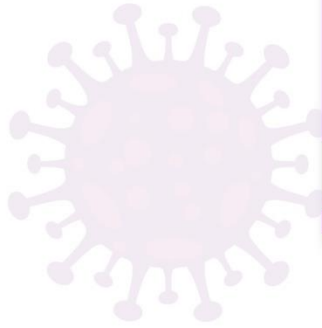
# INTERNATIONAL TRAVEL



- **Basotho and resident permit holders departing**
- **Permitted:**
  - **Patient plus two accompanying adults.**
  - **Business travellers**
  - **Students**
  - **Migrant workers with valid work permits and special permits**
  - **People with special needs and who shall be approved by NACOSEC.**
- **Traveling will be in accordance with the approved guidelines**



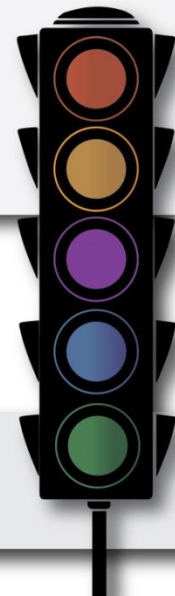


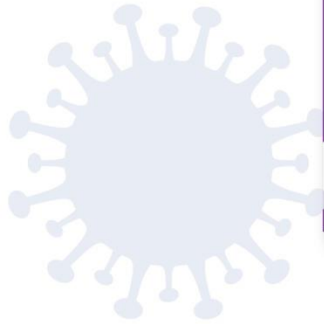


# POLITICAL GATHERINGS



- **Maximum of 50 people if inside.  
Maximum of 100 people if outside**
- **No food and alcohol.  
Should last not more than 2  
hours.**





# PITSO



- **Maximum of 50 people if inside.**
- **Maximum of 100 people if outside for COVID-19 awareness only.**
- **No food and alcohol.**
- **Should last not more than 2 hours.**



**THANK YOU**



**NACOSEC**  
NATIONAL COVID-19 SECRETARIAT

